
ACQUISITION OF LAMONT LAKE URANIUM PROJECT, LOCATED IN WORLD-CLASS MINING JURISDICTION

Highlights:

- **Agreement to acquire the Lamont Lake uranium exploration project in Saskatchewan, Canada**
- **Saskatchewan is a highly prospective uranium province and favourable operating jurisdiction**
- **Historical geological data from the project indicates shallow mineralisation and potential for significant resource development**
- **Historical shallow grade mineralisation occurs from near-surface to 57m and with grades of between 0.02% and 0.5% U₃O₈**
- **Initial analysis of available geological data shows similarities to the Beaverlodge deposits, only 90km southeast of tenement package**
- **Minimal modern exploration undertaken across tenement package highlights near-term value creation opportunity**
- **Lamont Lake Uranium Project provides exceptional optionality for ENRG and is a complementary asset to the Company's portfolio of clean energy assets**
- **Management continues to review historical data associated with project to define near term exploration program**

ENRG Elements Limited (**ASX:EEL, OTCQB: EELFF**) ("**ENRG**" or the "**Company**") is pleased to advise it has entered into an agreement to acquire 100% of the Lamont Lake Uranium Project ("**Project**") situated in North Saskatchewan, Canada. The Project is located approximately 85km northwest of Uranium City. The tenement holding is situated immediately north of the Athabasca Basin, where some of the world's highest-grade uranium deposits are situated.

The Project encompasses 4 mineral claims covering an area of ~22km². It is situated in an area that, based on historical drilling data, contains shallow uranium mineralisation, occurring from near-surface down to ~57m, with approximate grades of between 0.02% and 0.5%. The Project encompasses a landholding of 11 historic uranium occurrences, which include promising historical assays and geological data.

Initial analysis of the Project indicates it has geological similarities to the Beaverlodge deposits area, located approximately 90km to the southeast. During its production life, the Beaverlodge deposits produced approximately 56Mlb U₃O₈ at an average grade of 0.24% U₃O₈.

The acquisition of the Project presents ENRG with a compelling near-term exploration prospect and enhances diversification within the Company's project portfolio.

The Company's technical team continues to review historical exploration results and geological data associated with the new holding, which will form the basis for an exploration program at the Project.

ENRG Elements Managing Director, Caroline Keats, commented :

"We are very pleased to have entered into this favourable agreement to acquire 100% of the Lamont Lake Uranium Project, which is located in a world-class uranium province. The Project represents a valuable opportunity for ENRG, offering significant optionality and near-term exploration potential, while also contributing to the Company's strategy of diversifying jurisdictional risk."

"The acquisition follows an internal review by the Company's management and technical team, affirming the Project and its potential as a highly prospective area that contains historic, shallow uranium occurrences."

"The Company continues to review historical data from the Project and expects to complete exploration planning over the coming weeks. The Company is also assessing a number of other strategic opportunities to bolster its presence in key markets and will provide updates to shareholders on any significant developments."

ACQUISITION OVERVIEW AND TERMS:

ENRG has entered into a binding agreements with Marino Specogna, a private vendor (**Vendor**) to acquire 100% of the Project (the **Acquisition**), subject to the Company completing its due diligence enquiries.

The total consideration payable by the Company includes cash and fully paid ordinary shares in the Company (**Shares**) as follows:

- C\$27,500 in cash to be paid to the Vendor on execution of the agreement;
- 33,333,333 Shares to be issued to the Vendor on completion of the Acquisition (**Completion**); and;
- within six months of Completion, at the Company's discretion, the Company will either:
 - pay A\$100,000 in cash to the Vendor; or
 - issue the Vendor the number of Shares equal in value to A\$100,000 at a deemed issue price equal to the higher of:
 - the 10-day volume weighted average price of Shares over the trading days immediately prior to the issue date; or
 - A\$0.003,

(the **Deferred Consideration Shares**), (in either case, the **Deferred Consideration**).

If the Company elects for the Deferred Consideration to be paid in Shares, the issue of the Deferred Consideration Shares will be subject to the receipt of approval of the Company's shareholders. If shareholder approval is not obtained, the Company must instead pay to the Vendor the Deferred Cash Consideration.

Completion of the Acquisition is expected to occur within the next sixty days, subject to the Company's due diligence enquiries.

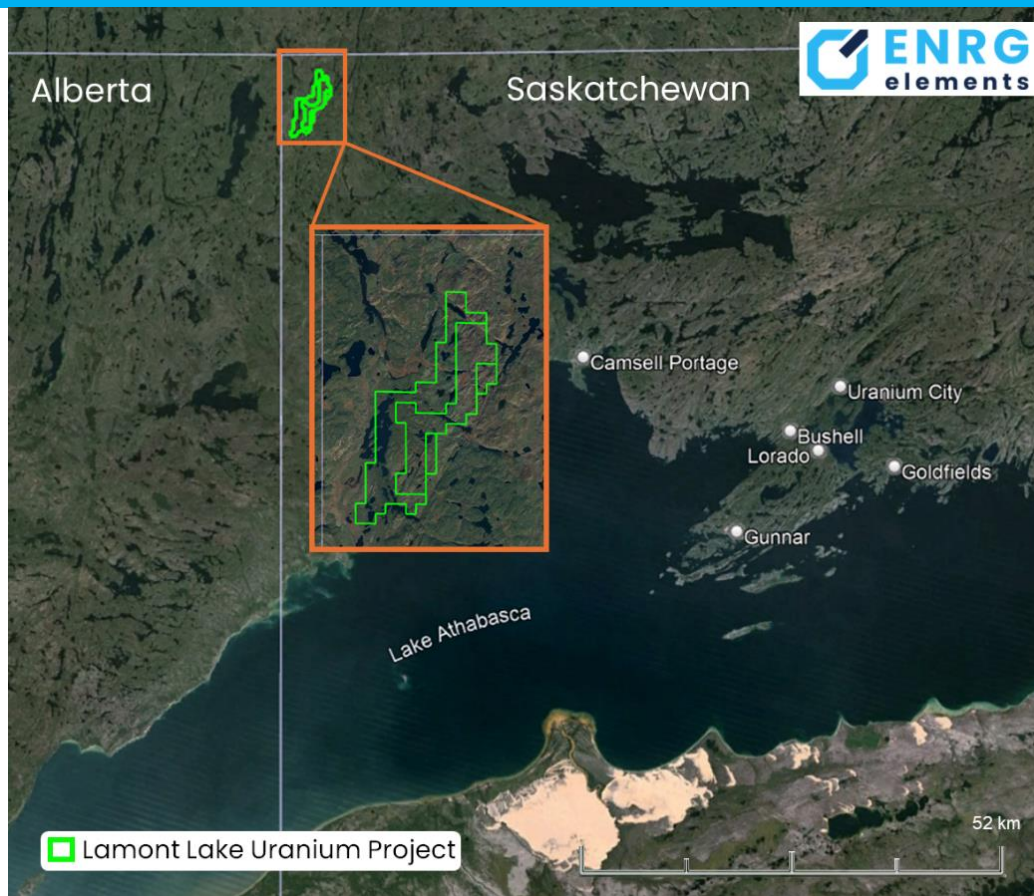


Figure 1: Lamont Lake Project location

HISTORICAL OVERVIEW OF THE PROJECT

ENRG has benefited from a technical review of historical exploration activities over the Project area, which was previously part of Permit N°4 (“**Permit 4**”). Permit 4 was acquired in 1966 by Numac Oil and Gas Limited (“**Numac**”), initially covering an area from Lake Athabasca through to British Columbia, Saskatchewan and the Northwest Territories border.¹

An airborne radiometric survey was undertaken in 1967 over Permit 4. The airborne scintillometer survey, totalling 1,615 line-miles, was carried out by helicopter using a Mount Sopris Airborne Scintillation Detector and 5” x 4” Harshaw Sodium Iodide Scintillation Crystal Detector. The flight lines were oriented normal to the regional faulting, at a spacing of one-quarter mile and flown at 100 feet high.²

In 1968, King Resources Company (“**King Resources**”) acquired claim blocks CBS 5535, CBS 5536 and CBS 5537, which included the Project area. King Resources completed an additional “fill-in” airborne radiometric survey over the area, which was subsequently prospected and airborne anomalies examined at ground level.³ Additionally, 347m of diamond drilling were carried out over

¹ Assessment File Number: 74N12-0006

² Assessment File Number: 74N12-0006

³ Assessment File Number: 74N12-0007 and Assessment File Number: 74N13-NW-0011

the claim blocks, on what is now identified as the S3 anomaly.⁴ The S3 anomaly is located within the Project area.

In 1977, Marubeni Canada Ltd (“**Marubeni**”) staked and was granted CBS 5535, CBS 5536 and CBS 5537. Geological mapping, prospecting and radiometric surveying in 1977, conducted by PNC Exploration (Canada) Co Ltd (“**PNC**”) on behalf of Marubeni, resulted in the discovery of a northerly trending uranium mineralised zone near the centre of the claim blocks, east of Lamont Lake. In 1978, a trenching and drilling program of 13 holes (refer Figure 3), totalling 807m was completed. In 1979, the claims were transferred to PNC.⁵

The historical work on the Project area indicates significant radioactive areas and isolated occurrences, together with shallow mineralisation down to a depth of ~57m, with approximate grades of between 0.02% and 0.5%.

There has been minimal recent exploration activity undertaken at the Project in recent years, presenting ENRG with an exceptional opportunity to build upon historical uranium findings. Moreover, this Project holds significant resource development potential for the Company.

MINERALISATION & ALTERATION ON THE TENEMENT BLOCK

The Project encompasses 4 mineral claims, where historical exploration work and drilling has been undertaken, resulting in promising historical assays and geological data.

Based on the airborne radiometric survey undertaken by Numac in 1967, significant radioactive areas and isolated occurrences were identified over the area, with a total of 48 anomalies located within Permit 4 and 11 specifically identified within the Project area.⁶

⁴ Assessment File Number: 74N13-NW-0011

⁵ Assessment file 74N13-NW-0011 and Assessment File Number: 74N13-0013

⁶ Assessment File Number: 74N12-0006

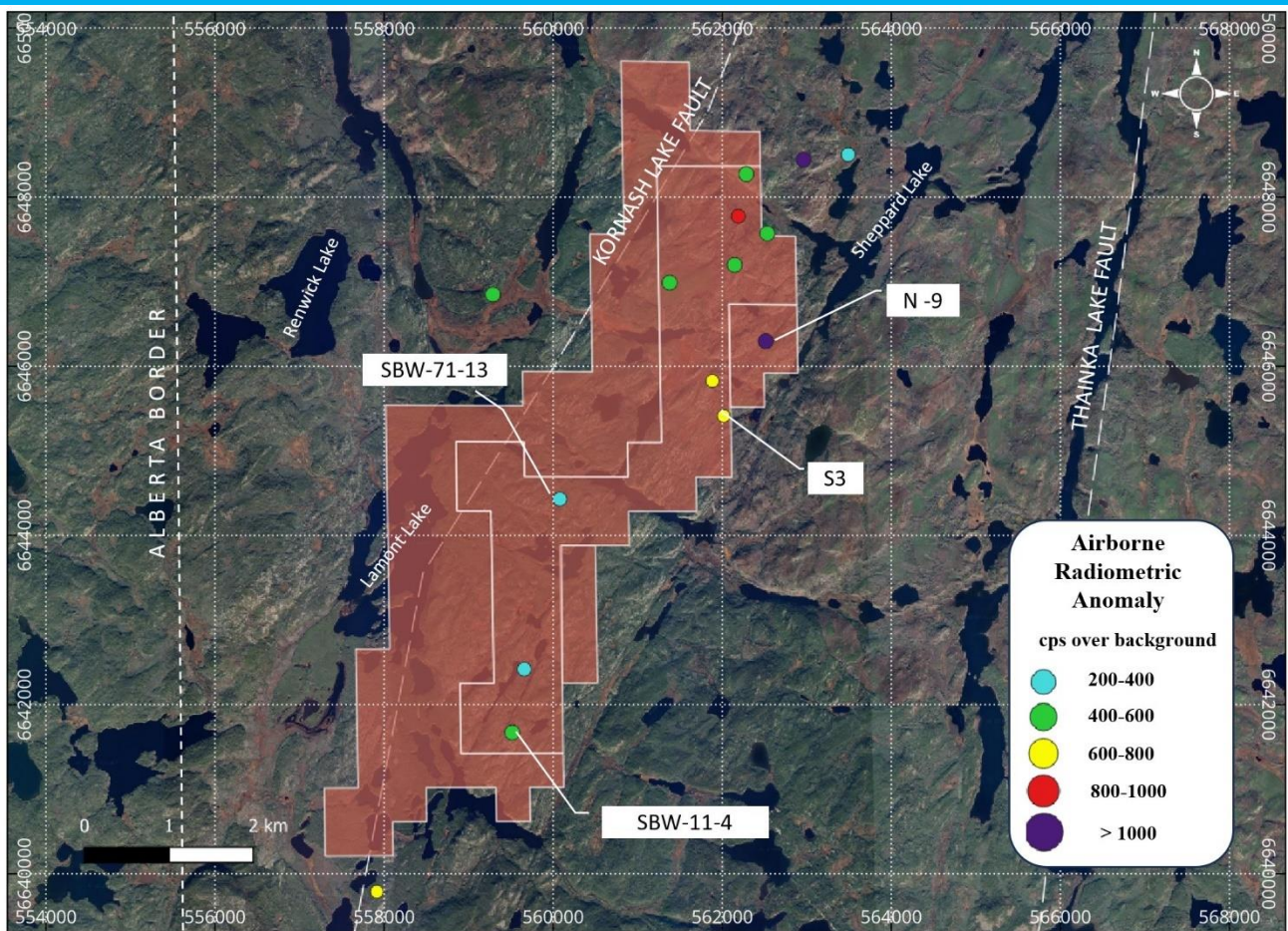


Figure 2: Airborne Radiometric Occurrences

From the available documentation, radioactive occurrences have the following characteristics.⁷

- **High Background:** Areas of bedrock up to a few hundred feet square are often found to give count rates averaging between 150 and 500 counts per second (“cps”). Locations over 1,000cps may be found but are not common. Host rocks are usually pink to red in colour, indicating weak hematization. Granite gneiss, mylonite, red crush-rock or cataclastic feldspar rock are the most common lithologies in which high background radioactivity is found.
- **Pegmatite Lenses:** radioactivity is found in conformable quartz-rich pegmatite lenses or segregations in migmatite or quartz-feldspathic gneiss. Occurrences are erratic and narrow, with count rates generally less than 2,500cps; however, they may reach 10,000cps in certain locations. Yellow uranium oxides are common.
- **Radioactive Fractures:** Radioactive fractures occur in up to three areas within the tenements. Pitchblende mineralisation along fractures is the source of the radioactivity in the majority of the occurrences. Count rates may range from 500cps to over 15,000cps. Significant

⁷ Assessment File Number: 74N12-0007

mineralisation may be indicated if the fractures are spatially related to nearby faulting or if radioactive fractures are traceable over significant distances.

The mineralisation over the area identified in the historical reports appears to consist predominantly of yellow uranium oxides and occurs as follows:⁸

- Along north-south shear planes in the isoclinally folded pegmatitic feldspathic gneiss. The shear zones predominantly occur in biotite layers, and recrystallised biotite is coated with yellow uranium oxides. Drill hole N°5 in the S3 anomaly area intersected pitch-blended mineralisation (0.51% over 0.5m), along a brecciated N-S fault zone.
- Uranium minerals consisting of uraninite, uranophane and boltwoodite occur in the concordant pegmatites, along major fractures and near the grain boundaries
- Minor radioactivity is associated with east-west fault systems. In 1968, King Resources tested the east-west fault systems in the S3 Anomaly area with a diamond drill program. The drill holes intersected uranium mineralisation.

In the South Kornash and SBW 71-13 Anomaly areas, the concordant nature of pegmatites with the associated radioactivity suggests the sedimentary origin for uranium mineralisation. The mineralisation is sporadic, varying from a few metres long to a few metres wide in the South Kornash area to several hundred metres long and 50 metres wide in the SBW 71-13 anomaly area.

Mineralisation is almost always associated with supergene or hydrothermal alteration. The alteration consists of a propylitic zone (chloritisation and epidotisation) and an argillic zone. The argillic zone is superimposed on the propylitic zone.

The areas exhibit extensive pervasive alteration, consisting of epidotisation and chloritisation, with surimposed argillic alteration and hematization.⁹

Based on historical exploration work, the main areas of interest in the Project area are outlined below and reflected in Figure 2 above.

A summary of the 1978 PMC historic drill holes and significant assay intervals are identified in **Appendix 1**.

⁸ Assessment File Number: 74N13-NW-0011

⁹ Assessment File Number: 74N13-NW-0011

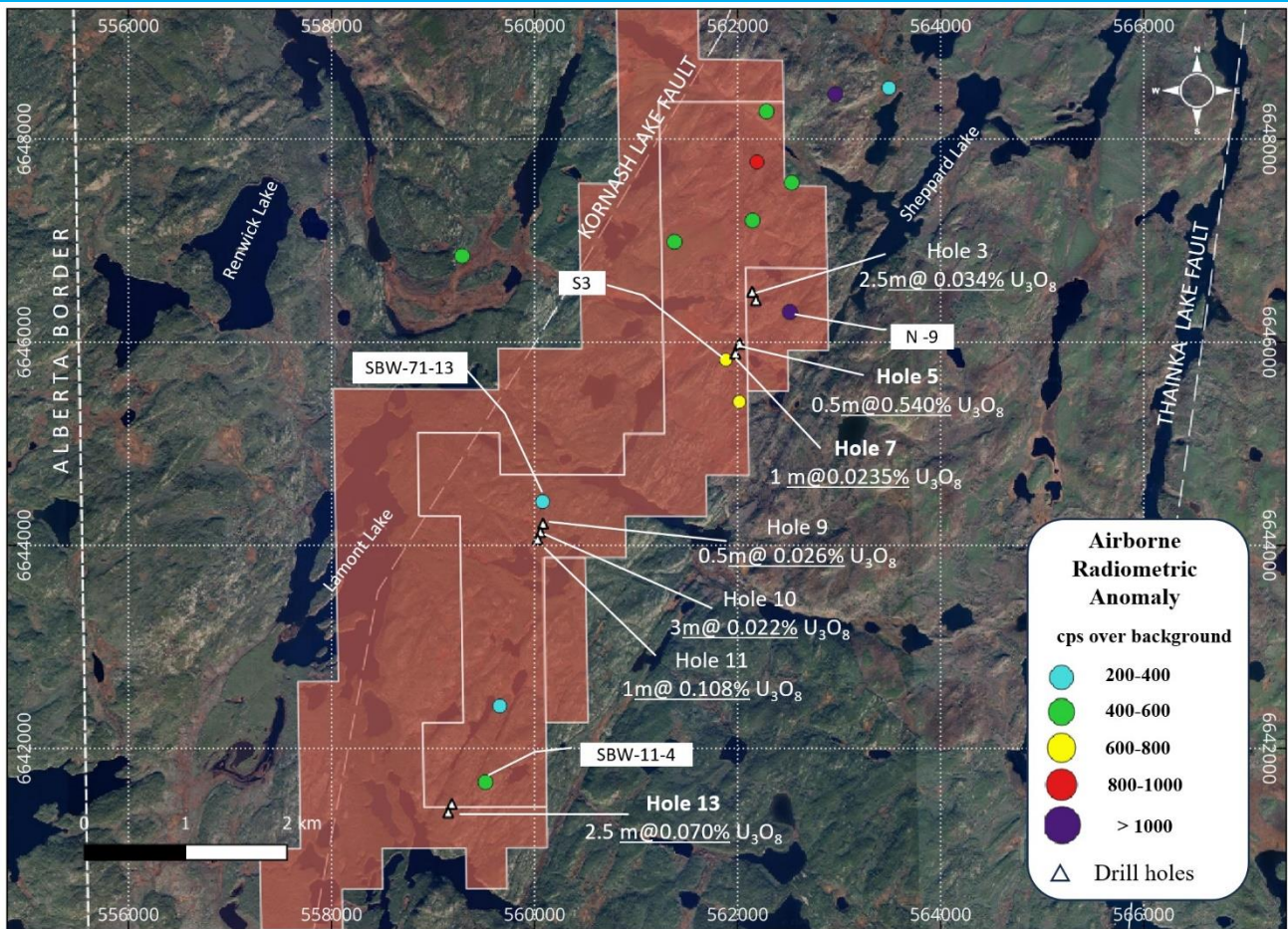


Figure 3: 1978 PNC Drill Holes

S3 Anomaly

Extensive brecciation and fracturing are evident in the area of this anomaly.

Radioactivity in the area reaches a maximum of 8,500cps. High radioactivity exists along the north-south trending structures. Two large radioactive zones, 50m by 250m and 50m by 150m in area, are present.

One trench was previously blasted, and a maximum assay value of 0.158% U_3O_8 was obtained.

Historical drill hole 5 encountered pitchblende mineralisation at a shallow depth of 30.2m. The assay average is 0.540% U_3O_8 over 0.5m. Drill hole 7 intersected 0.0235% U_3O_8 over 1m at a depth of 18m and 0.014% U_3O_8 over 0.5m at 20.5m depth.

These historical assay results highlight that mineralisation encountered is not particularly continuous over any definite length and appears erratic, but the alteration system was intersected, is very extensive and is mainly argillic with minor propylitic.¹⁰

¹⁰ Assessment File Number: 74N13-NW-0011

N-9 Anomaly

Radioactivity greater than 500cps exists in an area 50m wide by 350m long, with a max of 15,000cps. Two trenches were dug in the area, where a maximum assay of 0.158% U₃O₈ was obtained. Four holes were also drilled, with the highest average assay obtained in drill hole 3 of 0.034% U₃O₈ over 2.5m at a depth of 17m and 0.024% U₃O₈ over 2m at a depth of 32m.¹¹

SBW 71-13 Anomaly

Two radioactive zones greater than 500cps were identified in this area, with both zones more than 100m long and 30m wide. Radioactivity is associated with north trending structures within pegmatites. In places within the zone radioactivity reaches a maximum of 15,000cps with a shield on the crystal.

Historical exploration saw eight trenches stripped and one trench blasted. The highest assays obtained are 0.26% U₃O₈ over 1m width on the west zone and 0.5% U₃O₈ over 1m with on the east zone.

Three holes were drilled. Drill hole 9 showed 0.026% U₃O₈ over 0.5m at a depth of 24.5m. In drill hole 10, assays were 0.022% U₃O₈ over 3m at a depth of 13m and drill hole 11 assays included 0.108% U₃O₈ over 1m at a depth of 8.8m.¹²

SBW 11-4 Anomaly

The geology in this area consists predominantly of pegmatitic feldspathic gneiss, feldspathic gneiss and biotite gneiss. The rocks in this area have been isoclinally folded and are cut off by a NS fault on the west side. Radioactivity greater than 500cps occurs 6m wide by 100m long.

One trench was blasted in the area of highest radioactivity, with the highest assay obtained being 0.078% U₃O₈ over 1m.

The drill hole No. 13 intersected radioactivity close to the fault zone at a depth of 57.5m, with the average assay obtained is 0.070% U₃O₈ over 2.5m.¹³

SIMILAR GEOLOGICAL SETTING TO BEAVER LODGE

The Project area was selected based on an analysis of what are believed to be similar style deposits, particularly around the Beaverlodge district. Eldorado Mining and Refining Ltd, that later merged with the Saskatchewan Mining Development Corporation to ultimately form Cameco, mined and milled the Beaverlodge site, producing a total of 56Mlb U₃O₈ at an average grade of 0.24% U₃O₈ from 17 uranium deposits between 1953 and 1982.¹⁴

¹¹ Assessment File Number: 74N13-NW-0011

¹² Assessment File Number: 74N13-NW-0011

¹³ Assessment File Number: 74N13-NW-0011

¹⁴ Chi, G., Ashton, K., Deng, T., Xu, D., Li, Z., Song, H., Liang, L., & Kennicott, J. (2020). Comparison of granite-related uranium deposits in the Beaverlodge district (Canada) and South China - A common control of mineralization by coupled shallow and deep-seated geologic processes in an extensional setting [Review of *Comparison of granite-related uranium deposits in the Beaverlodge district (Canada) and South China - A common control of mineralization by coupled shallow and deep-seated geologic processes in an extensional setting*]. *Ore Geology Reviews*, 117(10339), 1–17; <https://www.beaverlodesites.com/>.

This deposit style is noted as inter-granitic and shear zone vein systems, which are associated with significant faulting.

The SBW 71-13 anomaly, noted above, indicates a similar geological position to the significant Beaverlodge district orebodies, particularly the Ace, Fay and Verna mines (refer figure 4).

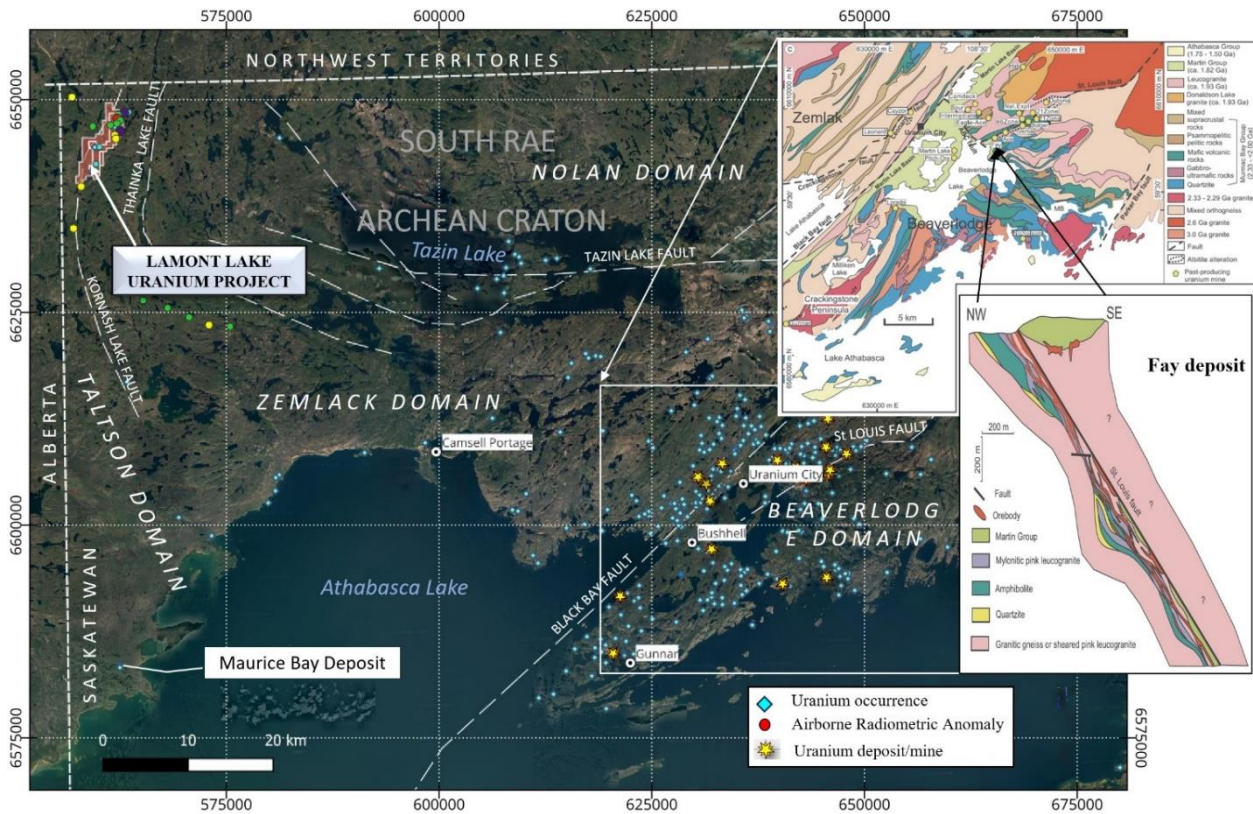


Figure 4: Geologic map of the Ace-Fay-Verna deposits (S.Dieng et al, 2013)

In general, the geology present in the Project area contains all the characteristics of a Beaverlodge analogue. Available gravity data also suggesting that the mineralisation in the tenement package could be considered a mirror image (to the northwest) of those in the Beaverlodge area (to the southeast) as shown in Figure 5.

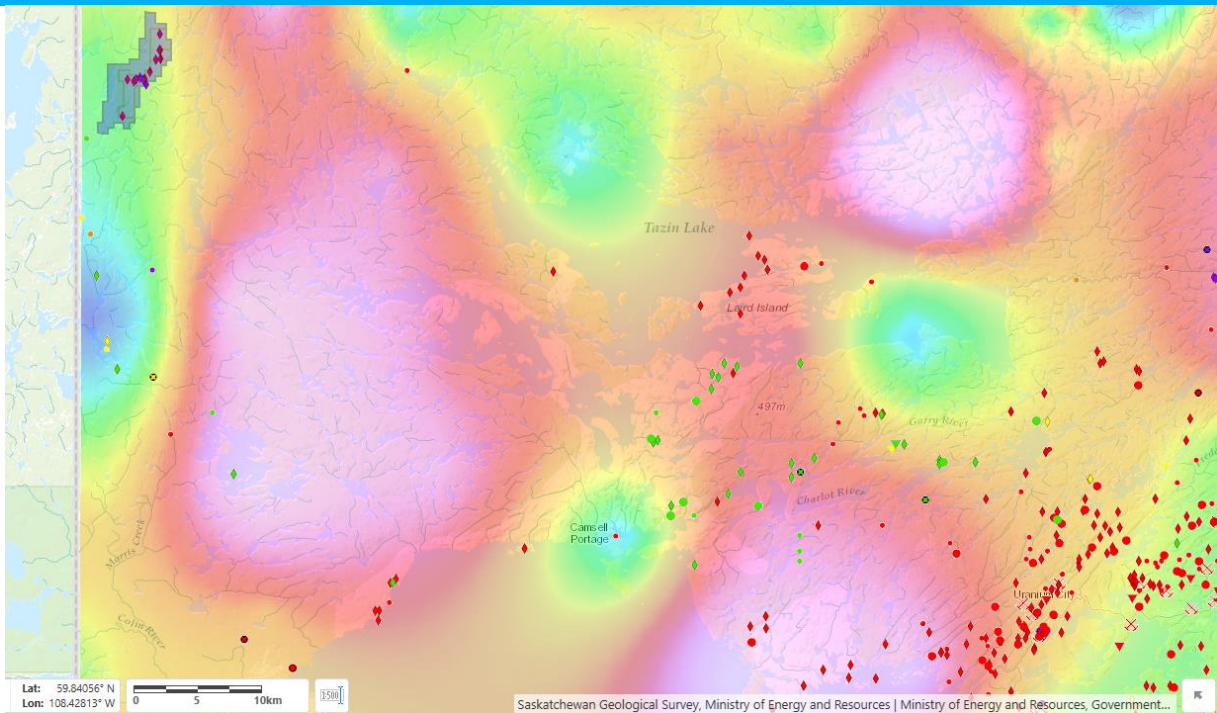


Figure 5: Tenements with Bougier Gravity vertical derivative overlay

GEOLOGICAL OVERVIEW

Most of the original Permit 4 area, which also covers the Project area, has been geologically mapped by the Department of Mineral Resources, Province of Saskatchewan, and published:¹⁵

- Report No. 61, The Geology of the Thainka Lake Area West Half Saskatchewan by F. Koster, 1961
- Report No. 71, The Geology of the Thainka Lake Area West Half Saskatchewan by F. Koster, 1962

Bedrock outcrops over 30% of the area, and due to significant glaciation, thin deposits of gravel and sand cover much of the remainder.

The area lies in the Churchill Province of the Canadian Shield. It consists of a northeastern basement complex, red gneiss complex, pegmatite-migmatite complex, metasedimentary and metavolcanic complex and granodiorite complex.

The northeastern basement complex has three units: granitic component, quartz dioritic, and amphibolite. The red gneiss complex is subdivided into eastern conglomerate, red gneisses, granulite, and amphibolitic metasedimentary rocks. The pegmatite-migmatite complex consists of various sedimentary rocks, biotite and chlorite schists, and biotite-sericite-quartz schists and is intruded by various phases of the granodiorite complex.¹⁶

Regional faulting significantly influences the geological structure, as shown in Figure 6, particularly the arcuate Tazin River Fault, which is the most dominant and is a key geological division in the area. East of this fault lies a widespread area of red gneisses, apparently unconformably overlying a “granitic” basement. To the west of the Tazin River Fault lies the granodiorite complex. A

¹⁵ Assessment File Number: 74N12-0006

¹⁶ Assessment File Number: 74N13-NW-0011

pegmatite-migmatite complex, where the Project area mainly sits, is situated between the Tazin River Fault and the granodiorites.¹⁷

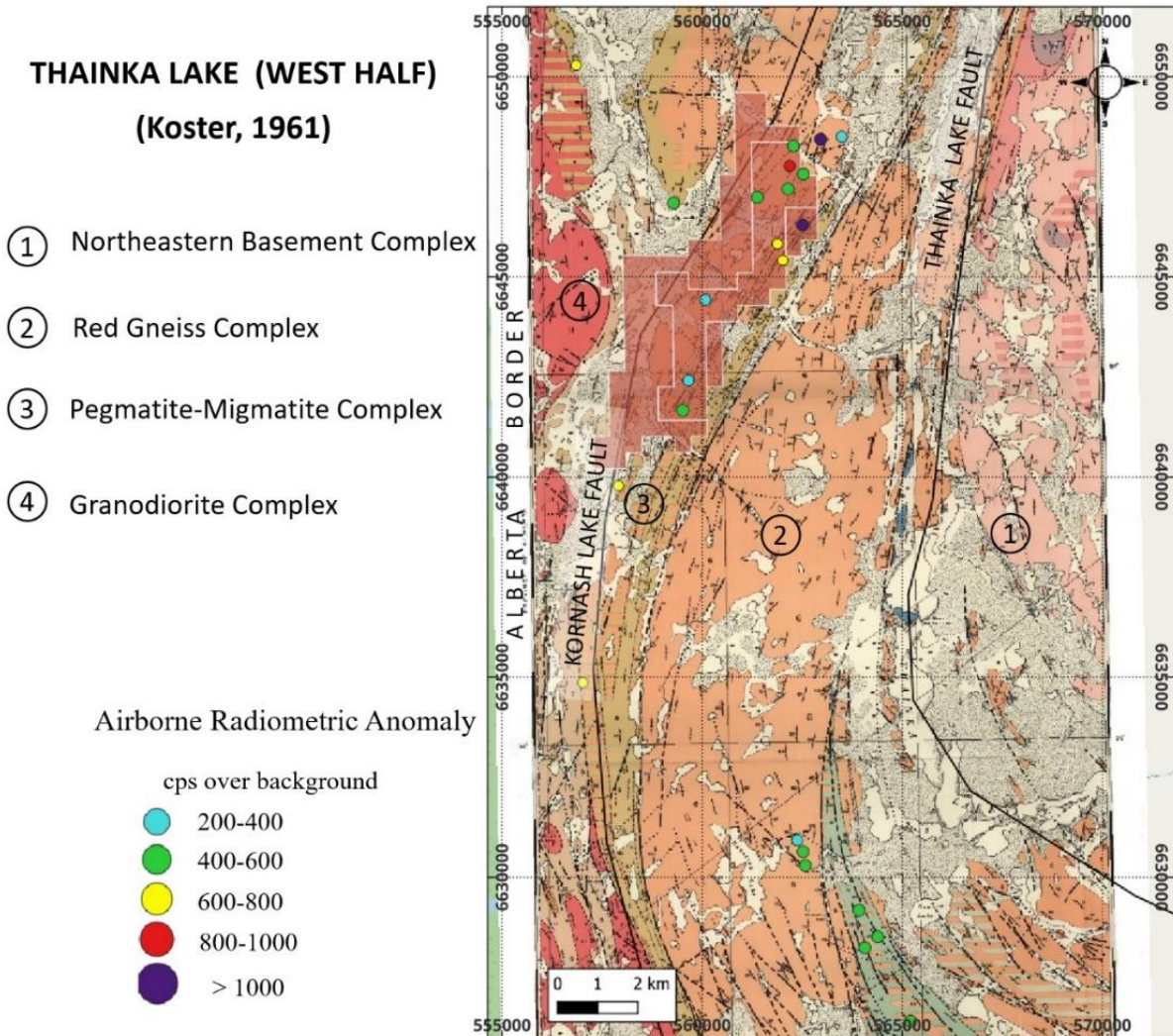


Figure 6: Regional Geology

The red gneiss complex, east of the Tazin River Fault, consists of dark red gneiss, ranging in textural composition from rhyolitic to granitic. The red gneiss-pegmatite complex and pegmatite-biotite complex occur west of the Tazin River Fault. The feldspathic biotite gneiss is composed predominantly of biotite, quartz and feldspar. Feldspathic gneiss within the complex consists predominantly of quartz and feldspar. The pegmatitic portion of the feldspathic gneiss consists mainly of megacrysts of quartz, feldspar, minor biotite and chlorite. The pegmatitic portions appear in a majority of cases in noses of folds. In places, the pegmatite bodies cut across foliation; these characteristic features indicate that migmatitisation took place early in the history of the rocks and were subsequently metamorphosed and folded with sediments and volcanics.

¹⁷ Assessment File Number: 74N12-0006

Strong isoclinal folding has taken place in the Project area. Numerous shear zones or shear planes occur parallel to the limbs of the folds and sometimes cut across the hinges of folds. The shear planes are parallel to the gneissosity.

The area appears to have suffered a minimum of two periods of deformation:

- Strong isoclinal folding exists, with fold axes trending N25°E and dipping vertically. The fold axes plunge between 10 and 40 degrees; and
- East-west faulting (N115°E) which is almost perpendicular to the N25°E deformation. In place, especially in S3 anomaly area, movement along N25°E faults after east-west faulting has been observed.¹⁸

NEXT STEPS

While the Lamont Lake Uranium Project acquired by ENRG is relatively unexplored from a modern perspective, there are objective indications of its uranium potential based on the Company's review of historical exploration data. The Project's geology and structural setting suggest similarities with nearby significant mineralisation and uranium production, which provides a considerable opportunity for ENRG.

Previously identified mineralisation is relatively shallow with minimal ground cover, indicating that future exploration efforts could be conducted at relatively lower costs when compared to the deeper mineralisation situated in the Athabasca Basin.

The Company will continue to review historical data associated with the Project, which will be used to plan near-term exploration initiatives. As plans are finalised and exploration activities commence, additional updates will be provided to the market.

-ENDS-

Authorised by the Board of ENRG Elements Limited.

For further enquiries, please contact:

Caroline Keats

Managing Director

ENRG Elements

info@enrg-elements.com

+61 8 6263 4400

www.enrg-elements.com

Henry Jordan

Six Degrees Investor Relations

Henry.jordan@sdir.com.au

+61 431 271 538

¹⁸ Assessment File Number: 74N13-NW-0011

About ENRG Elements Limited

ENRG Elements Limited (ASX:EEL) is a company focused on the exploration and development of its uranium and copper projects, both commodities which are essential for a clean energy future.

The Company holds 100% of the underexplored Agadez Uranium Project located in the Tim Mersoï Basin of Niger, with a JORC Resource of 21.5Mlbs of contained U_3O_8 at 315ppm (175ppm cut-off grade) from surface to ~37m depth (ASX Release – 26 April 2023). Agadez hosts similar geology to Orano SA's Cominak/Somair and Imouraren uranium mines and the deposits held by Global Atomic Corporation (TSE:GLO) and GoviEx Uranium (CVE:GXU). The Company was also granted the Tarouadji Project in Niger in 2023, a lithium exploration permit covering approximately 500km², located 70km² from the Company's flagship Agadez Uranium Project.

Niger has one of the world's largest uranium reserves, and in 2021, it was the seventh-highest uranium producer globally¹⁹ with the Tim Mersoï Basin in Niger hosting the highest-grade and tonnage uranium ores in Africa.²⁰

The Company recently secured 3 exploration permits in Manitoba, Canada, that are prospective for lithium (ASX Releases – 5 December 2023 and 29 December 2023).

ENRG Elements owns 10% of the shares in Icon-Trading Company Pty Ltd and Ashmead Holdings Pty Ltd, which hold a total of 6 prospecting licences, comprising the Ghanzi West Copper-Silver Project, which covers an area of 2,630km². ENRG Elements also holds 25% of Alvis-Crest (Proprietary) Limited, the holder of two prospecting licences, the Virgo Project. Both projects are located in Botswana's Kalahari Copper Belt, one of the most prospective copper belts in the world, which hosts Sandfire Resources' Motheo Copper Mine and Khoemacau Copper Mining's Zone 5 underground mine. Botswana is a stable, pro-mining jurisdiction, supportive of mineral exploration and development.

The Directors and management of ENRG Elements have strong complementary experience with over 90 years of Australian and international technical, legal and executive experience in exploration, resource development, mining, legal and resource fields.

Competent Persons Statement

The information on the Lamont Lake Exploration Results outlined in this announcement is based on, and fairly reflects, information reviewed and compiled by Dr Jean Christophe Corbin. Dr Corbin is a consultant employed by Geoviz Consulting Australia. Dr Corbin is a Member of the Australian Institute of Geoscientists and has sufficient experience which is relevant to the style of mineralisation and type of deposit under consideration and to the activity which he is undertaking to qualify as a Competent Person as defined in the "Australasian Code for Reporting of Exploration Results, Mineral Resources and Ore Reserves – The JORC Code (2012)". Dr Corbin approves of, and consents to, the inclusion of the information in this announcement in the form and context in which it appears.

The information relating to previous Niger Exploration Results and Mineral Resources outlined in this announcement was compiled by Mr. David Princep, an independent consultant employed by Gill Lane Consulting. Mr Princep is a Fellow of the Australasian Institute of Mining and Metallurgy and a Chartered Professional Geologist. Mr Princep has more than five years relevant experience in estimation of mineral resources and the mineral commodity uranium. Mr Princep has sufficient experience relevant to the assessment of this style of mineralisation to qualify as a Competent Person as defined in the JORC Code (2012).

¹⁹ <https://world-nuclear.org/information-library/facts-and-figures/uranium-production-figures.aspx>.

²⁰ <https://www.sciencedirect.com/science/article/pii/S016913682200213X>.

The information relating to previous Canadian Manitoba Exploration Results outlined in this announcement was compiled by Mr Michael Griffiths, an independent consultant employed by Black Barrel Exploration Pty Ltd. Mr Griffiths is a Fellow of the Australasian Institute of Mining and Metallurgy. Mr Griffiths has sufficient experience relevant to the assessment of this style of mineralisation to qualify as a Competent Person as defined in the JORC Code (2012).

The Company confirms that the form and context in which the previous results are presented and all material assumptions and technical parameters underpinning the estimates in the original market announcement continue to apply and have not materially changed or been materially modified from the original announcements.

Appendix 1 – Historic Drill Collars and Assay Intervals

Hole Id	East	North	RI	Depth	Dip	Azimuth
1	562,144	6,646,496	350	50.3	-45	295
2	562,144	6,646,496	350	47.3	-90	0
3	562,144	6,646,496	350	50.3	-45	115
4	562,180	6,646,412	350	50.3	-45	295
5	562,021	6,645,989	350	50.3	-45	305
6	562,021	6,645,989	350	50.3	-45	275
7	561,978	6,645,891	350	50.9	-45	305
8	561,978	6,645,891	350	50.9	-45	275
9	560,084	6,644,215	350	81.4	-45	115
10	560,059	6,644,131	350	80.9	-45	115
11	560,030	6,644,062	350	81.4	-45	115
12	559,186	6,641,453	350	81.4	-45	295
13	559,151	6,641,369	350	81.4	-45	295

Table 1 PNC 1978 Drill Collars Derived from Maps

Hole Id	Depth From (m)	Depth To (m)	Interval (m)	U ₃ O ₈ (%)
1	-	-	-	-
2	-	-	-	-
3	22.1	24.1	2.0	0.021
4	13.4	14.4	1.0	0.0475
	17.0	19.0	2.0	0.0298
	32.0	34.5	2.5	0.040
5	30.0	30.5	0.5	0.54
6	47.5	50.0	2.5	0.0496
7	20.5	21.0	0.5	0.014
8	16.0	16.5	0.5	0.013
	18.0	19.0	1.0	0.0245
	20.0	22.0	2.0	0.011
9	24.0	25.0	1.0	0.0195
10	8.5	9.0	0.5	0.016
	13.0	14.0	1.0	0.0285
	16.0	18.0	2.0	0.1975
	30.0	32.0	2.0	0.0165
	61.5	62.5	1.0	0.028
11	8.8	9.8	1.0	0.108
12	-	-	-	-
13	57.5	60.0	2.5	0.0704

Table 2 PNC assay intervals

Appendix 2

JORC Code, 2012 Edition – Table 1 report

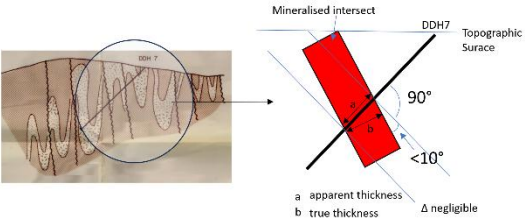
Section 1 Sampling Techniques and Data (Criteria in this section apply to all succeeding sections.)

Criteria	JORC Code explanation	Commentary
Sampling techniques	<ul style="list-style-type: none"> • <i>Nature and quality of sampling (eg cut channels, random chips, or specific specialised industry standard measurement tools appropriate to the minerals under investigation, such as down hole gamma sondes, or handheld XRF instruments, etc). These examples should not be taken as limiting the broad meaning of sampling.</i> • <i>Include reference to measures taken to ensure sample representivity and the appropriate calibration of any measurement tools or systems used.</i> • <i>Aspects of the determination of mineralisation that are Material to the Public Report.</i> • <i>In cases where ‘industry standard’ work has been done this would be relatively simple (eg ‘reverse circulation drilling was used to obtain 1 m samples from which 3 kg was pulverised to produce a 30 g charge for fire assay’). In other cases more explanation may be required, such as where there is coarse gold that has inherent sampling problems. Unusual commodities or mineralisation types (eg submarine nodules) may warrant disclosure of detailed information.</i> 	<ul style="list-style-type: none"> • All drilling and sampling is historic in nature with drill logs indicating the drilling technique as diamond. Connors Drilling performed the diamond drilling on behalf of PNC Exploration from June 23 to September 1, 1978. • Samples appear to have been collected to the relevant standard at the time of drilling. PNC recorded downhole gamma logging using a GAM-1 Probe supplied by Scintrex. The samples were taken at depths with the highest peaks obtained from the radiometric logging • Specific details of the historical drilling has not been located in the reporting currently available. However, the drilling logs, geological surveys, and downhole gamma recordings associated with the reports are of a sufficient standard and quality to enable the Company to assess the sampling carried out. • As far as the Company is aware, where material has been sampled, specific intervals were selected based on visual logs.

Criteria	JORC Code explanation	Commentary
Drilling techniques	<ul style="list-style-type: none"> • <i>Drill type (eg core, reverse circulation, open-hole hammer, rotary air blast, auger, Bangka, sonic, etc) and details (eg core diameter, triple or standard tube, depth of diamond tails, face-sampling bit or other type, whether core is oriented and if so, by what method, etc).</i> 	<ul style="list-style-type: none"> • Historic drilling – Diamond drilling from surface.
Drill sample recovery	<ul style="list-style-type: none"> • <i>Method of recording and assessing core and chip sample recoveries and results assessed.</i> • <i>Measures taken to maximise sample recovery and ensure representative nature of the samples.</i> • <i>Whether a relationship exists between sample recovery and grade and whether sample bias may have occurred due to preferential loss/gain of fine/coarse material.</i> 	<ul style="list-style-type: none"> • Information available to date is based on examination of paper logs. • Reporting suggests that some of the early drilling was in highly fractured ground and that recoveries were variable. PNC drill logs indicated that core recoveries were in the order of 98%. • No recovery information is available to determine if a relationship exists between grade and recovery.
Logging	<ul style="list-style-type: none"> • <i>Whether core and chip samples have been geologically and geotechnically logged to a level of detail to support appropriate Mineral Resource estimation, mining studies and metallurgical studies.</i> • <i>Whether logging is qualitative or quantitative in nature. Core (or costean, channel, etc) photography.</i> • <i>The total length and percentage of the relevant intersections logged.</i> 	<ul style="list-style-type: none"> • Historical paper logs. Graphical logs appear to have been completed for each drill hole. No mineral resource or metallurgical studies appear to have been undertaken. • No photographs of drill core are available. • Historic – Hole depths and, where relevant, uranium scintillometer results and, in some cases, assay results. • Early (1960's) drilling appears to have been downhole probed with an ST22 probe. • The drilling completed by PNC downhole was logged with a Scintrex GAM-1 probe
Sub-sampling techniques and sample preparation	<ul style="list-style-type: none"> • <i>If core, whether cut or sawn and whether quarter, half or all core taken.</i> • <i>If non-core, whether riffled, tube sampled, rotary split, etc and whether sampled wet or dry.</i> 	<ul style="list-style-type: none"> • Historic – Where uranium was observed it is expected that the core was split by hand if the core was of sufficient size as was standard Canadian practice. • Samples are a combination of rock chips and diamond drill

Criteria	JORC Code explanation	Commentary
	<ul style="list-style-type: none"> • <i>For all sample types, the nature, quality and appropriateness of the sample preparation technique.</i> • <i>Quality control procedures adopted for all sub-sampling stages to maximise representivity of samples.</i> • <i>Measures taken to ensure that the sampling is representative of the in situ material collected, including for instance results for field duplicate/second-half sampling.</i> • <i>Whether sample sizes are appropriate to the grain size of the material being sampled.</i> 	<p>core.</p> <ul style="list-style-type: none"> • Historic – Sample preparation details are presumed to have been industry standard practice at the time of sampling. • Historic – Measures to ensure sample representivity are unknown. • Historic – Appropriateness of sample size relative to the mineralisation grain size of the material being sampled is unknown. • Details from the PNC logs suggest that assay samples were taken in 0.5m increments and were based on general zones of higher radioactivity.
<p>Quality of assay data and laboratory tests</p>	<ul style="list-style-type: none"> • <i>The nature, quality and appropriateness of the assaying and laboratory procedures used and whether the technique is considered partial or total.</i> • <i>For geophysical tools, spectrometers, handheld XRF instruments, etc, the parameters used in determining the analysis including instrument make and model, reading times, calibrations factors applied and their derivation, etc.</i> • <i>Nature of quality control procedures adopted (eg standards, blanks, duplicates, external laboratory checks) and whether acceptable levels of accuracy (ie lack of bias) and precision have been established.</i> 	<ul style="list-style-type: none"> • Information available is historical and assay laboratories or analytical techniques are unknown at this time. Assaying completed by PNC was undertaken at Chemex Labs in Alberta using Fluorometric techniques. • The 1960’s drilling was downhole probed with an ST22 probe and the 1970’s drilling with a GAM-1 probe with scintillometer checks of the core samples having been completed. • Uranium mineralogy was determined by XRD analysis. • Some PNC samples were also analysed by DNAA in order to compare the results from Fluorometric and DNAA analysis. • At present it is unknown as to whether any duplicate samples were taken. • Running Fox completed a rock chip sampling programme and analysed samples by ICP at SRC Geoanalytical Laboratories in Saskatoon using their uranium package plus Boron

Criteria	JORC Code explanation	Commentary
Verification of sampling and assaying	<ul style="list-style-type: none"> • The verification of significant intersections by either independent or alternative company personnel. • The use of twinned holes. • Documentation of primary data, data entry procedures, data verification, data storage (physical and electronic) protocols. • Discuss any adjustment to assay data. 	<ul style="list-style-type: none"> • No verification of assaying or sampling is currently available for pre-1970's samples. • PNC undertook a comparison analysis between Fluorimetry and Delayed Neutron activation with the results of 19 samples indicating a very good correlation between the two. It is assumed PNC followed industry standard procedures and protocols when collecting and storing data. • No adjustment has been made to assay data.
Location of data points	<ul style="list-style-type: none"> • Accuracy and quality of surveys used to locate drill holes (collar and down-hole surveys), trenches, mine workings and other locations used in Mineral Resource estimation. • Specification of the grid system used. • Quality and adequacy of topographic control. 	<ul style="list-style-type: none"> • Drilling is historical and the collar coordinates are recorded on paper plans the methods of deriving the actual drill collar locations is unknown. PNC collar locations are in NAD27 grid • UTM grid NAD83 grid was used to source data from the Saskatchewan Government GeoAtlas GIS portal. • Reports are generally in an imposed local grid with an identified baseline and offsets.
Data spacing and distribution	<ul style="list-style-type: none"> • Data spacing for reporting of Exploration Results. • Whether the data spacing and distribution is sufficient to establish the degree of geological and grade continuity appropriate for the Mineral Resource and Ore Reserve estimation procedure(s) and classifications applied. • Whether sample compositing has been applied. 	<ul style="list-style-type: none"> • Historical drill holes targeted specific radiometric and geological targets generated by surface mapping and local and airborne geophysical surveys. • Historical drilling will not be used in the preparations of any subsequent Mineral Resource statement. • Historic, no compositing has been documented.
Orientation of data in relation to geological structure	<ul style="list-style-type: none"> • Whether the orientation of sampling achieves unbiased sampling of possible structures and the extent to which this is known, considering the deposit type. • If the relationship between the drilling orientation and the orientation of key mineralised structures is considered to 	<ul style="list-style-type: none"> • The trenches targeted areas likely to host appropriate geology and mineralisation and, based on the available ground radiometric surveys, were orthogonal to mineralised trends. • Historic drilling was perpendicular to the postulated

Criteria	JORC Code explanation	Commentary
	<p><i>have introduced a sampling bias, this should be assessed and reported if material.</i></p>	<p>uranium mineralisation and appears to have intersected the targeted host geology.</p> <ul style="list-style-type: none"> PNC drill logs suggest that the mineralisation was intersected within 10 degrees either side of orthogonal. Based on this, difference between apparent thickness and true thickness is negligible. 
<p>Sample security</p>	<ul style="list-style-type: none"> <i>The measures taken to ensure sample security.</i> 	<ul style="list-style-type: none"> Historic Drilling – No information regarding sample security is known.
<p>Audits or reviews</p>	<ul style="list-style-type: none"> <i>The results of any audits or reviews of sampling techniques and data.</i> 	<ul style="list-style-type: none"> No audits or reviews have been undertaken as far as is known.

Section 2 Reporting of Exploration Results (Criteria listed in the preceding section also apply to this section.)

Criteria	JORC Code explanation	Commentary
Mineral tenement and land tenure status	<ul style="list-style-type: none"> Type, reference name/number, location and ownership including agreements or material issues with third parties such as joint ventures, partnerships, overriding royalties, native title interests, historical sites, wilderness or national park and environmental settings. The security of the tenure held at the time of reporting along with any known impediments to obtaining a licence to operate in the area. 	<ul style="list-style-type: none"> Consists of four (4) Mineral Claims (MC00018675, MC00019192, MC00019193, MC00019194). The current registered holder is Marino Specogna and there are no third party agreements to our knowledge. The licenses are in good standing and ENRG is unaware of any impediments for exploration on these leases.
Exploration done by other parties	<ul style="list-style-type: none"> Acknowledgment and appraisal of exploration by other parties. 	<ul style="list-style-type: none"> Historical work was completed in the area during the 1950's to 2000's by Uranium Ridge Mines, Numac Mining, King Resources, PNC Exploration and Running Fox Resource Corporation. In 1955 Uranium Ridge Mines completed 124m of diamond drilling as follow-up to surface prospecting. They also completed some limited trenching. In 1968 King Resources completed 347m of diamond drilling as well as an airborne radiometric survey, prospecting and detailed geological mapping. In the late 1970's PNC completed airborne radiometric and magnetic surveys and follow-up diamond drilling (13 holes for 807m), Track Etch surveying, soil sampling, geological mapping, prospecting and ground radiometric surveying. Minor work was completed in 2007 and 2008 by Running Fox Resource Corporation and was limited to rock chip sampling, geological mapping and prospecting

Criteria	JORC Code explanation	Commentary
Geology	<ul style="list-style-type: none"> • <i>Deposit type, geological setting and style of mineralisation.</i> 	<ul style="list-style-type: none"> • The permit area lies in the northwestern corner of Saskatchewan, adjacent to the Alberta, Northwest Territories and Saskatchewan borders. The property sits entirely within the Rae Province of the Precambrian Shield. This geologic province is further subdivided into the Zemplak and Taltson Domains in this region. • The Zemplak Domain is bordered to the west by the Taltson Domain, the Nolan and Ena domains to the north, and to the east by the Black Bay Fault, which marks the transition to the Beaverlodge Domain. • Highly metamorphosed quartzites, amphibolites and pelites of the Murmac Bay Group constitute about 20% of the Zemplak Domain. Within the region, basal conglomerates, feldspathic arenites and argillites unconformably overlay the Archean Basement. Variable levels of mylonitization are also present throughout the domain. • The rocks are in turn overlain by felsic breccias of the Ellis Bay Group, and Redbeds of the Martin Group. The stratigraphic framework of the Zemplak Domain is broadly similar to that of the Beaverlodge Domain, which is host to significant past Uranium production at Uranium City. • To the west, the boundary of the Taltson-Zemplak Domain is characterized by a ductile mylonitic zone with a metamorphic gradient increasing eastward. The western Zemplak Domain is dominated by ortho and paragneiss (Ashton et al., 2005; Saskatchewan Geological Survey, 2003).

Criteria	JORC Code explanation	Commentary
		<ul style="list-style-type: none"> The Taltson Domain is primarily in Alberta, but a small portion of it crosses the Alberta/Saskatchewan border over the very western edge of the permit area. It is characterized by a granite-diorite suite and has been interpreted as an intra-continental batholith or continental arc. This domain also includes lower greenschist facies sandstones, mudstones and volcanic rocks of the Waugh Lake Group at its eastern extent. Widespread faulting is present throughout the area, primarily trending in a general north-south direction. The Tazin River Fault is the major structural feature running through the region. Other major faults in the area include: Morris, Kinokamaw Lake, Thainka East, Thainka West and Tessen.
<p>Drill hole Information</p>	<ul style="list-style-type: none"> A summary of all information material to the understanding of the exploration results including a tabulation of the following information for all Material drill holes: <ul style="list-style-type: none"> ✓ easting and northing of the drill hole collar ✓ elevation or RL (Reduced Level – elevation above sea level in metres) of the drill hole collar ✓ dip and azimuth of the hole ✓ down hole length and interception depth ✓ hole length. If the exclusion of this information is justified on the basis that the information is not Material and this exclusion does not detract from the understanding of the report, the Competent Person should clearly explain why this is the case. 	<ul style="list-style-type: none"> Drill hole locations are based on a combination of local grids and digitised maps. Drill hole elevation, dips and azimuths are derived from drill logs reviewed for the PNC 1978 drilling program. All drill collar locations for this drill program are shown in Appendix 1.

Criteria	JORC Code explanation	Commentary
Data aggregation methods	<ul style="list-style-type: none"> <i>In reporting Exploration Results, weighting averaging techniques, maximum and/or minimum grade truncations (eg cutting of high grades) and cut-off grades are usually Material and should be stated.</i> <i>Where aggregate intercepts incorporate short lengths of high grade results and longer lengths of low grade results, the procedure used for such aggregation should be stated and some typical examples of such aggregations should be shown in detail.</i> <i>The assumptions used for any reporting of metal equivalent values should be clearly stated.</i> 	<ul style="list-style-type: none"> As the data is historical in nature the methods of aggregating the assay information is unknown.
Relationship between mineralisation widths and intercept lengths	<ul style="list-style-type: none"> <i>These relationships are particularly important in the reporting of Exploration Results.</i> <i>If the geometry of the mineralisation with respect to the drill hole angle is known, its nature should be reported.</i> <i>If it is not known and only the down hole lengths are reported, there should be a clear statement to this effect (eg 'down hole length, true width not known').</i> 	<ul style="list-style-type: none"> Mineralisation widths are only identified on paper logs and do not represent the thickness of any mineralisation encountered, only it's lateral extent in one dimension. Any interval lengths noted in this announcement are down hole only and the true width is unknown however paper logs indicate near orthogonal intercepts.
Diagrams	<ul style="list-style-type: none"> <i>Appropriate maps and sections (with scales) and tabulations of intercepts should be included for any significant discovery being reported These should include, but not be limited to a plan view of drill hole collar locations and appropriate sectional views.</i> 	<ul style="list-style-type: none"> Maps and plans are included in the text. Due to the limited and historical nature of the information available, at present it is not possible to produce meaningful cross sections.
Balanced reporting	<ul style="list-style-type: none"> <i>Where comprehensive reporting of all Exploration Results is not practicable, representative reporting of both low and high grades and/or widths should be practiced to avoid misleading reporting of Exploration Results.</i> 	<ul style="list-style-type: none"> Only available historical data is reported.

Criteria	JORC Code explanation	Commentary
<p>Other substantive exploration data</p>	<ul style="list-style-type: none"> Other exploration data, if meaningful and material, should be reported including (but not limited to): geological observations; geophysical survey results; geochemical survey results; bulk samples – size and method of treatment; metallurgical test results; bulk density, groundwater, geotechnical and rock characteristics; potential deleterious or contaminating substances. 	<ul style="list-style-type: none"> A summary of the historic data is presented above. No additional exploration data is currently available.
<p>Further work</p>	<ul style="list-style-type: none"> The nature and scale of planned further work (eg tests for lateral extensions or depth extensions or large-scale step-out drilling). Diagrams clearly highlighting the areas of possible extensions, including the main geological interpretations and future drilling areas, provided this information is not commercially sensitive. 	<ul style="list-style-type: none"> ENRG intends to undertake follow-up exploration involving both airborne and ground geophysics, ground mapping and drilling in order to identify the proposed structural controls on mineralisation. See text of Announcement.